



East Texas
Human Needs Network

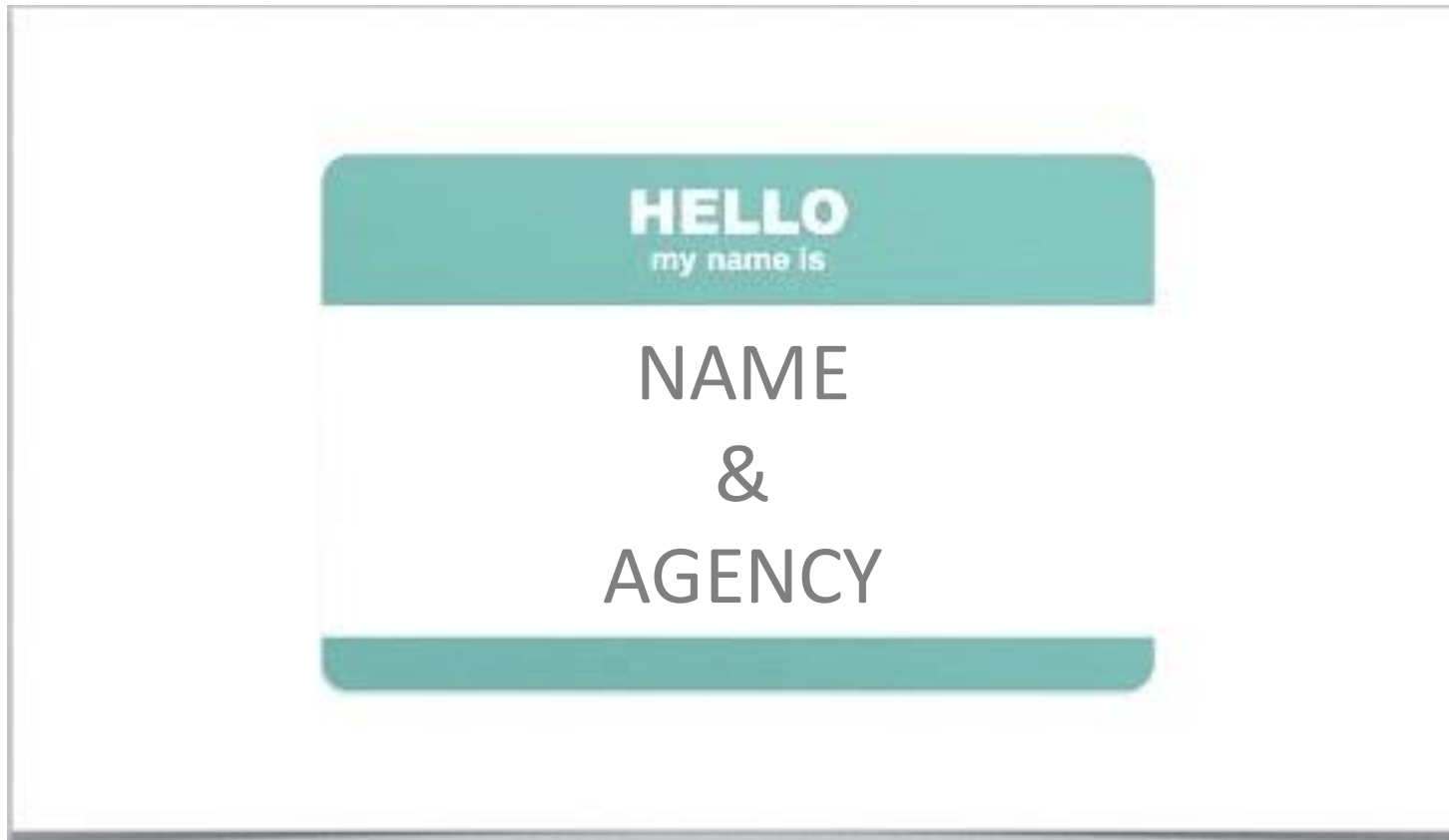
March 9, 2015

Agenda



- Welcome
- Introductions
- Draw Toast
- Break-out into Committees
- Updates and announcements
- Close

Introductions



Diverse organizations and individuals working together for strengthened programs, connection and improved awareness of services that meet essential human needs.

Collaboration



**... a PURPOSEFUL,
STRATEGIC way of WORKING
that leverages the RESOURCES of each party
for the BENEFIT OF ALL
by COORDINATING ACTIVITIES and COMMUNICATING
INFORMATION
within an environment
of TRUST AND TRANSPARENCY.**

Diverse organizations and individuals working together for strengthened programs, connection and improved awareness of services that meet essential human needs.

Vision



A community with
equitable access for all.

Diverse organizations and individuals working together for strengthened programs, connection and improved awareness of services that meet essential human needs.

Mission



Diverse organizations and individuals working together for strengthened programs, connection and improved awareness of services that meet essential human needs.

Diverse organizations and individuals working together for strengthened programs, connection and improved awareness of services that meet essential human needs.

2015 Point in Time Homeless Survey & Count Smith County

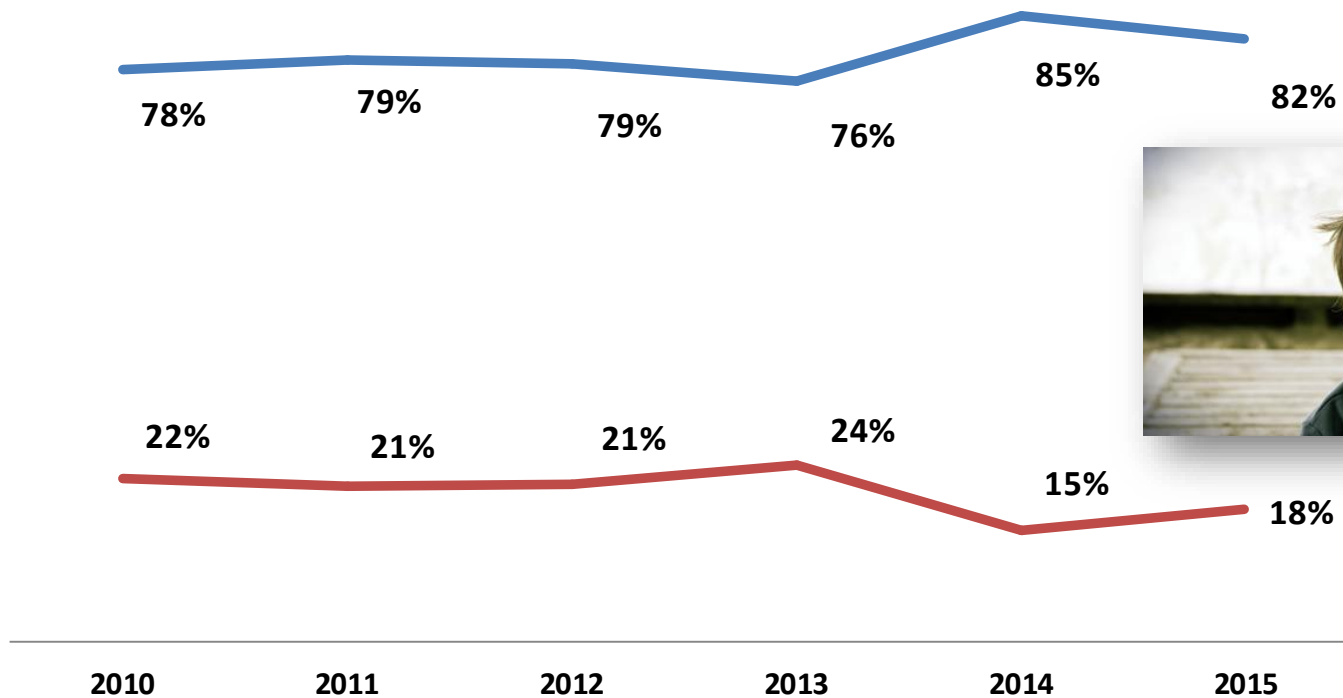


Diverse organizations and individuals working together for strengthened programs, connection and improved awareness of services that meet essential human needs.

233 homeless persons were found on the night of the survey, 43 were children



— Homeless Adults — Homeless Children



Diverse organizations and individuals working together for strengthened programs, connection and improved awareness of services that meet essential human needs.

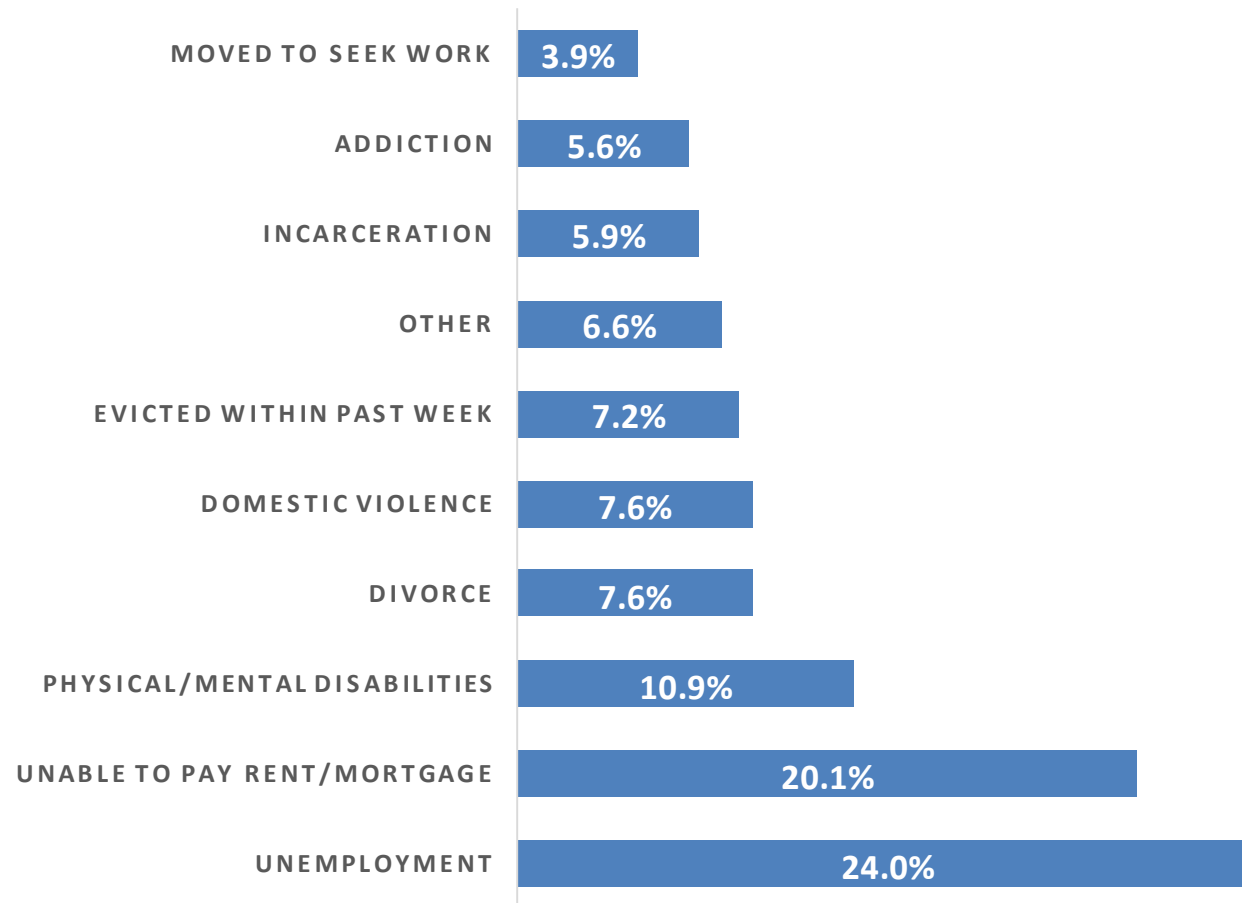
**Median age of
Adults is
47 years old**

**Median age of
Children is
5 years old**



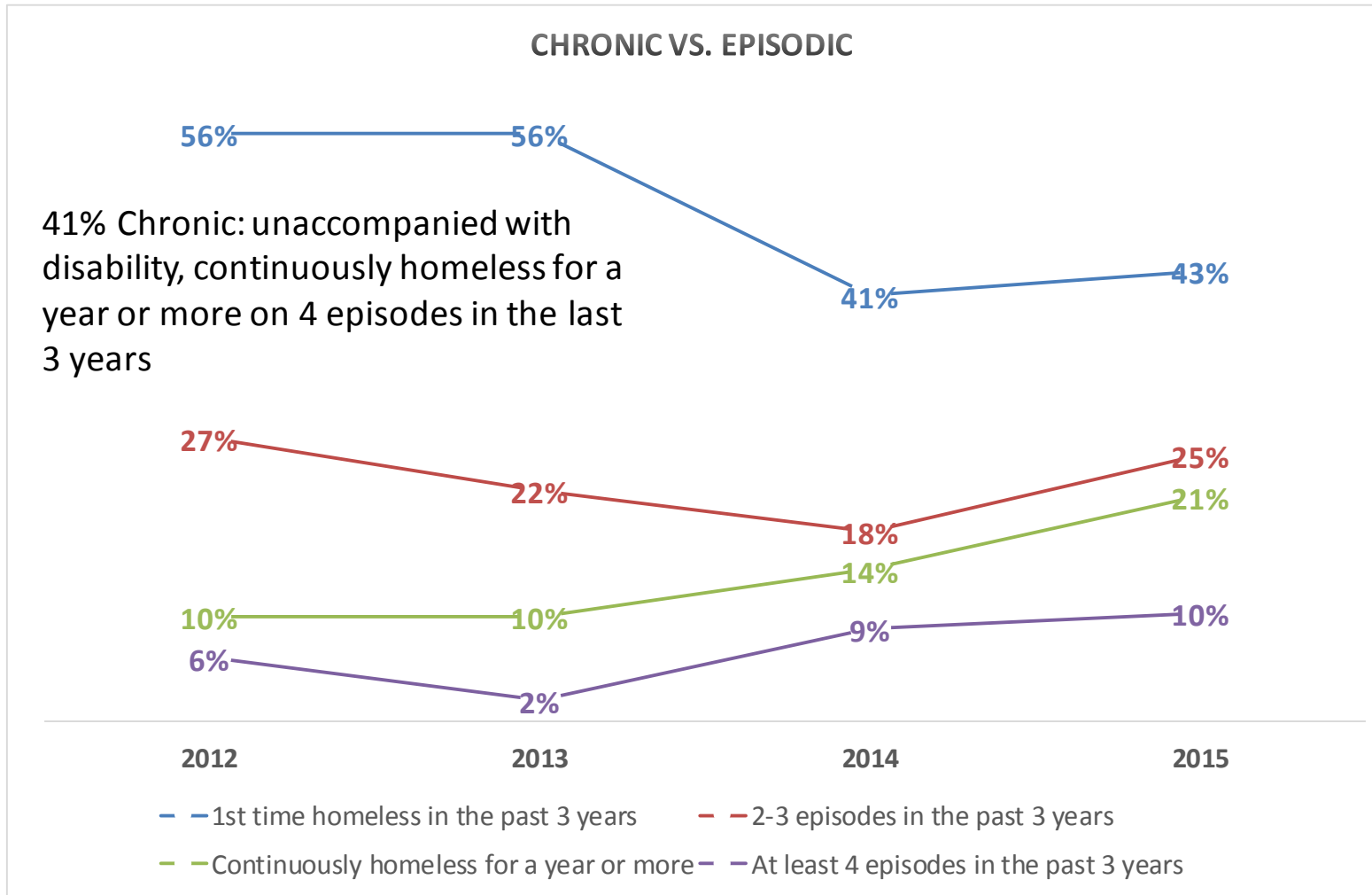
Diverse organizations and individuals working together for strengthened programs, connection and improved awareness of services that meet essential human needs.

Reasons for becoming homeless



Diverse organizations and individuals working together for strengthened programs, connection and improved awareness of services that meet essential human needs.

Chronic vs. Episodic



Diverse organizations and individuals working together for strengthened programs, connection and improved awareness of services that meet essential human needs.

Length of homelessness



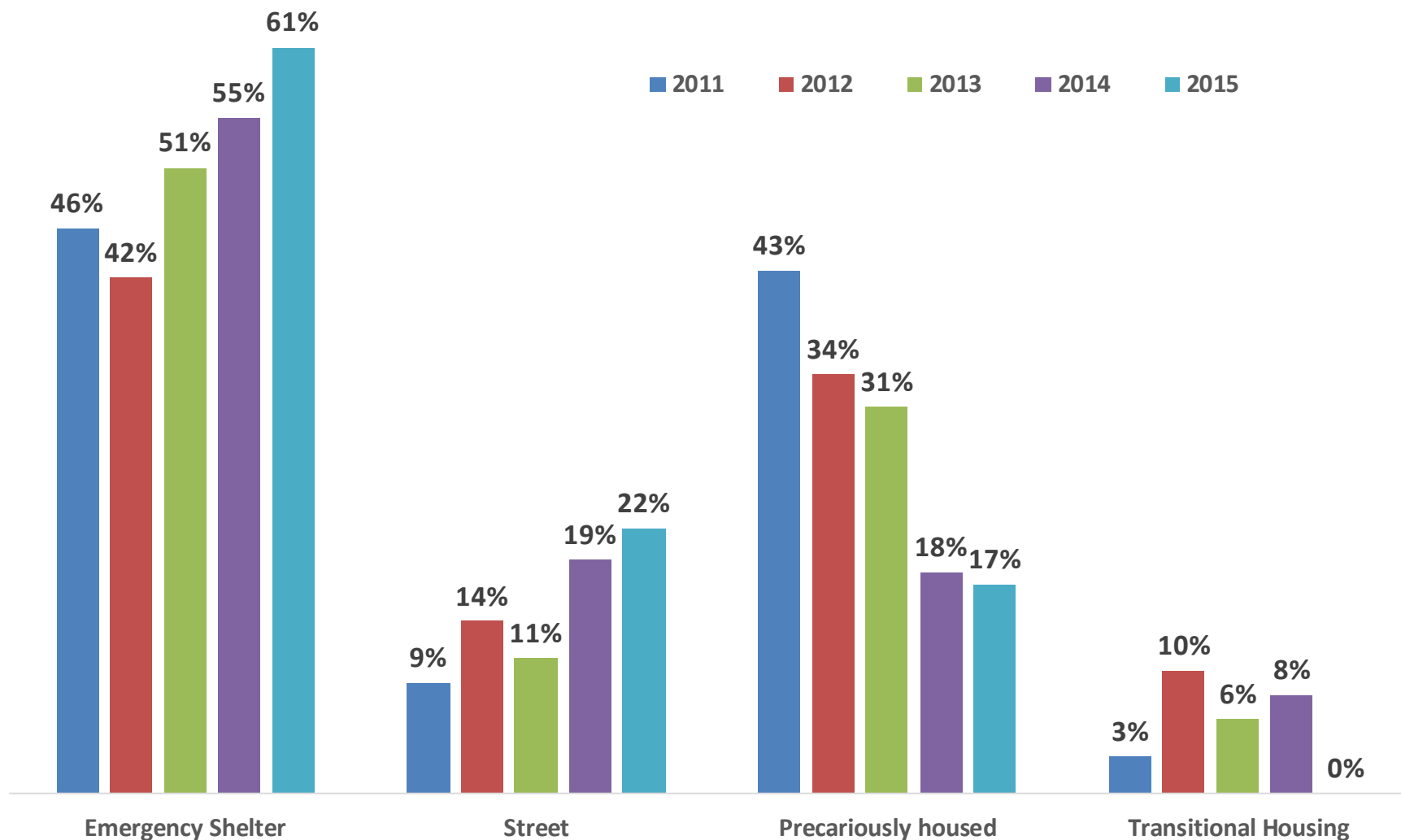
There is a decrease in new homelessness;
however, those experiencing homelessness
are remaining

homeless longer periods of time,
in 2010 the average homelessness lasted
90 days,

In 2015 the average homelessness lasts
162 days.



Where they stayed last night

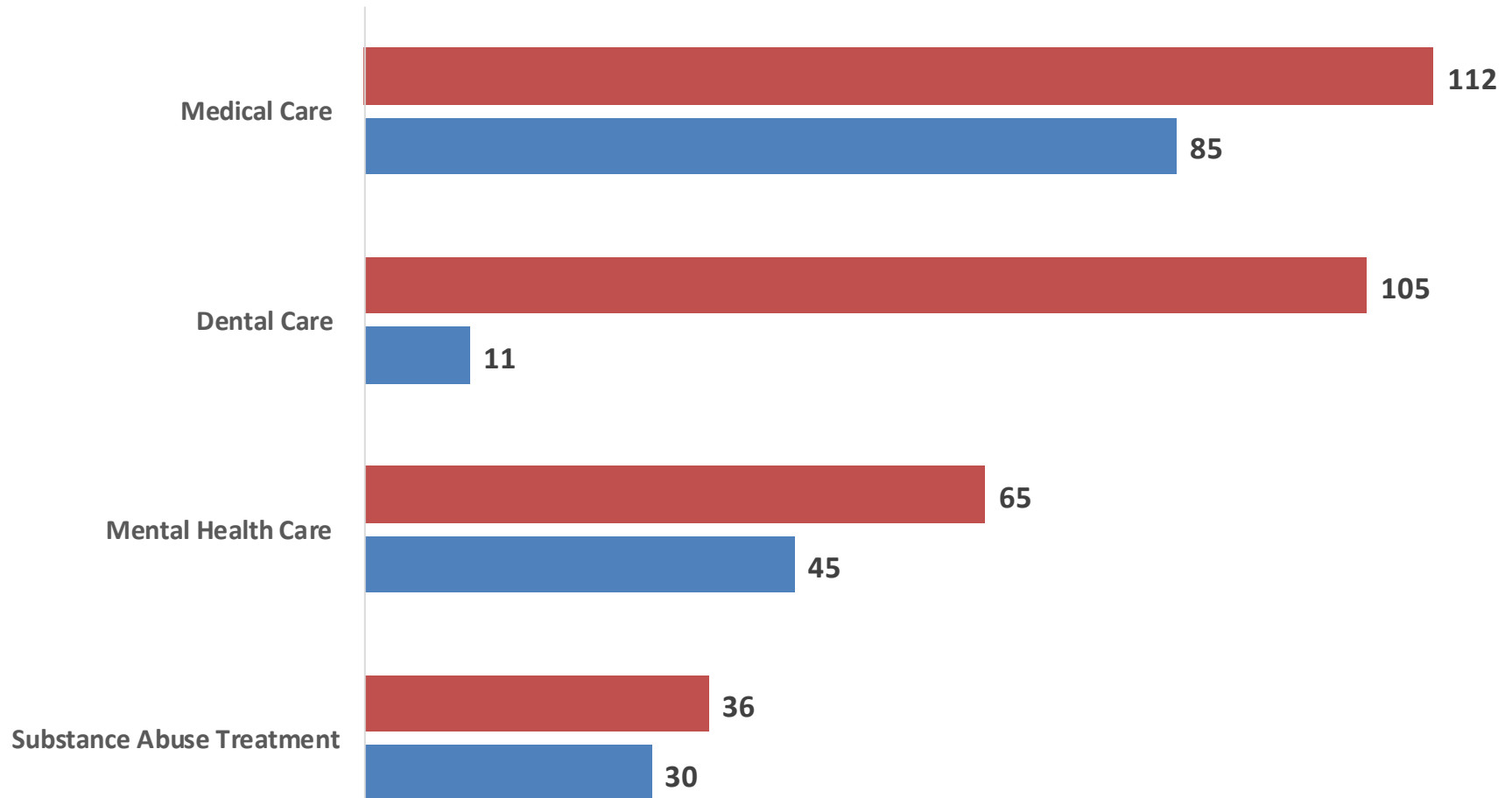


Diverse organizations and individuals working together for strengthened programs, connection and improved awareness of services that meet essential human needs.

Care Needed vs. Care Received



■ Needed Care ■ Received Care



Diverse organizations and individuals working together for strengthened programs, connection and improved awareness of services that meet essential human needs.



COMMITTEE BREAK-OUT SESSIONS

1 HOUR

Diverse organizations and individuals working together for strengthened programs, connection and improved awareness of services that meet essential human needs.

BRIDGES OUT OF POVERTY



Bridges Community

April 14, 2015

8:30am - 4:30 pm

Hollytree Country Club * 6700 Hollytree Drive * Tyler, TX 75703

Diverse organizations and individuals working together for strengthened programs, connection and improved awareness of services that meet essential human needs.

Volunteer Income Tax Assistance



January 28 – April 15

Wednesdays

3 – 6

Saturdays

9 – 12 noon

Earn it!
Keep it!
Grow it!



No Appointment Necessary

Volunteer Income Tax Assistance Program

402 W. Front St., Tyler

Diverse organizations and individuals working together for strengthened programs, connection and improved awareness of services that meet essential human needs.

TISD Head Start 2015 – 2016

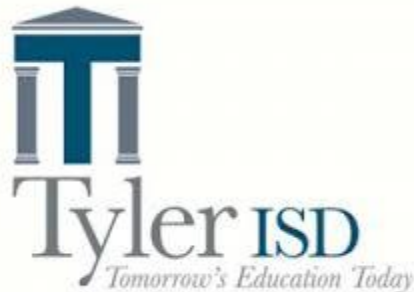


ACCEPTING APPLICATIONS

February 17 – April 30

Child must be 4 years old
by September 1, 2015

903.262.1180



Poverty Simulation Volunteers



April 2 * 2:00 – 5:00 * UT Tyler

April 8 * 1:00 – 4:00 * TJC

www.ETHNN.org

Diverse organizations and individuals working together for strengthened programs, connection and improved awareness of services that meet essential human needs.

Housing Summit & Legislative Day



- BIG Partnerships Conference
- March 31 – April 2
- Austin
- Register online:

[CSH.org/](https://www.csh.org/)

[Events-calendar/](https://www.csh.org/events-calendar/)

[BIG Partnerships Conference](https://www.csh.org/events-calendar/big-partnerships-conference/)

Information Sharing



Share the news!



Please share agency information that would be **helpful to other service providers and the clients they serve!**

1. WHAT?
2. WHEN?
3. WHERE?
4. CONTACT?

Activities more than 30 days away,
share online at
www.ethnn.org/information-sharing

Diverse organizations and individuals working together for strengthened programs, connection and improved awareness of services that meet essential human needs.



FEEDBACK FORM



Please write down your comments and suggestions

If you want me to contact you, please complete the following:

Date:

Name:

Phone #:

Email address:

Now
or
Send feedback anytime at
www.ethnn.org/we-are-listening

We are listening!





Diverse organizations and individuals working together for strengthened programs, connection and improved awareness of services that meet essential human needs.

Next month we will draw toast!



Monday, April 13

1:00 – 3:00 pm

The Salvation Army Multipurpose Room

Tyler, TX

Please register online

www.ethnn.org