

**County Health
Rankings & Roadmaps**

Building a Culture of Health, County by County

A Robert Wood Johnson Foundation program

2017 *County Health Rankings*

Texas



A collaboration between the Robert Wood Johnson Foundation and the University of Wisconsin Population Health Institute.



Support provided by

Robert Wood Johnson Foundation

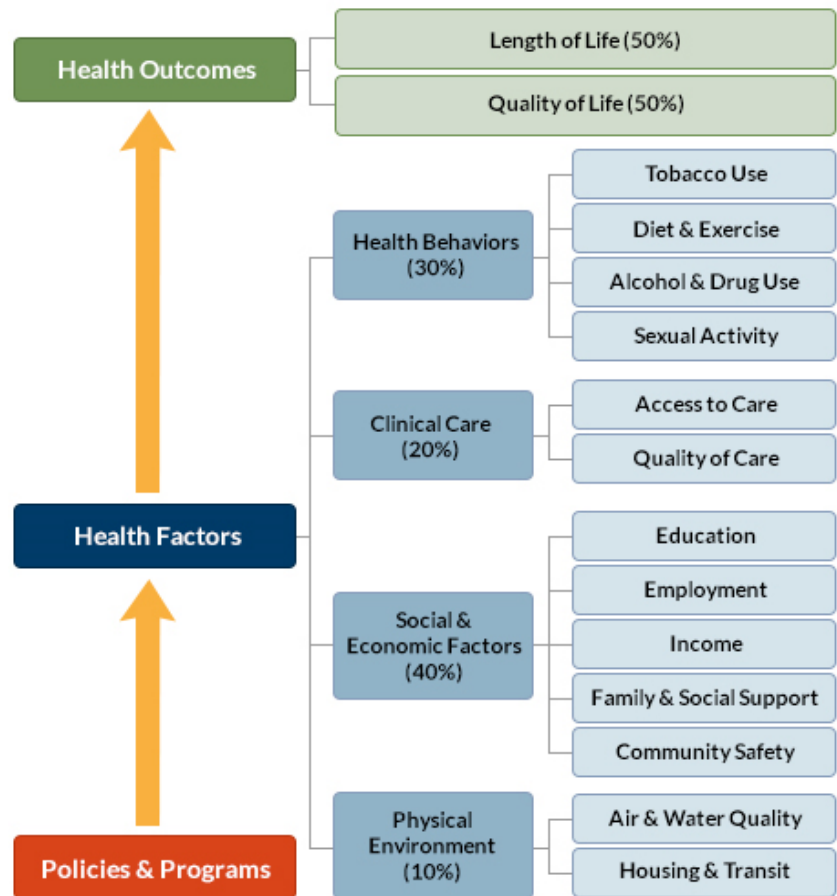


INTRODUCTION

The *County Health Rankings & Roadmaps* program brings actionable data and strategies to communities to make it easier for people to be healthy in their homes, schools, workplaces, and neighborhoods. Ranking the health of nearly every county in the nation, the *County Health Rankings* illustrate what we know when it comes to what is making people sick or healthy. The *Roadmaps* show what we can do to create healthier places to live, learn, work, and play. The Robert Wood Johnson Foundation (RWJF) collaborates with the University of Wisconsin Population Health Institute (UWPHI) to bring this program to cities, counties, and states across the nation.

WHAT ARE THE COUNTY HEALTH RANKINGS?

Published online at countyhealthrankings.org, the *Rankings* help counties understand what influences how healthy residents are and how long they will live. The *Rankings* are unique in their ability to measure the current overall health of nearly every county in all 50 states. They also look at a variety of measures that affect the future health of communities, such as high school graduation rates, access to healthy foods, rates of smoking, obesity, and teen births. Communities use the *Rankings* to help identify issues and opportunities for local health improvement, as well as to garner support for initiatives among government agencies, healthcare providers, community organizations, business leaders, policy makers, and the public.



DIGGING DEEPER INTO HEALTH DATA

Although we know that a range of factors are important for good health, every state has communities that lack both opportunities to shape good health and strong policies to promote health for everyone. Some counties lag far behind others in how well and how long people live – which we refer to as a “health gap.” Find out what's driving health differences across your state and what can be done to close those gaps. Visit countyhealthrankings.org/reports.

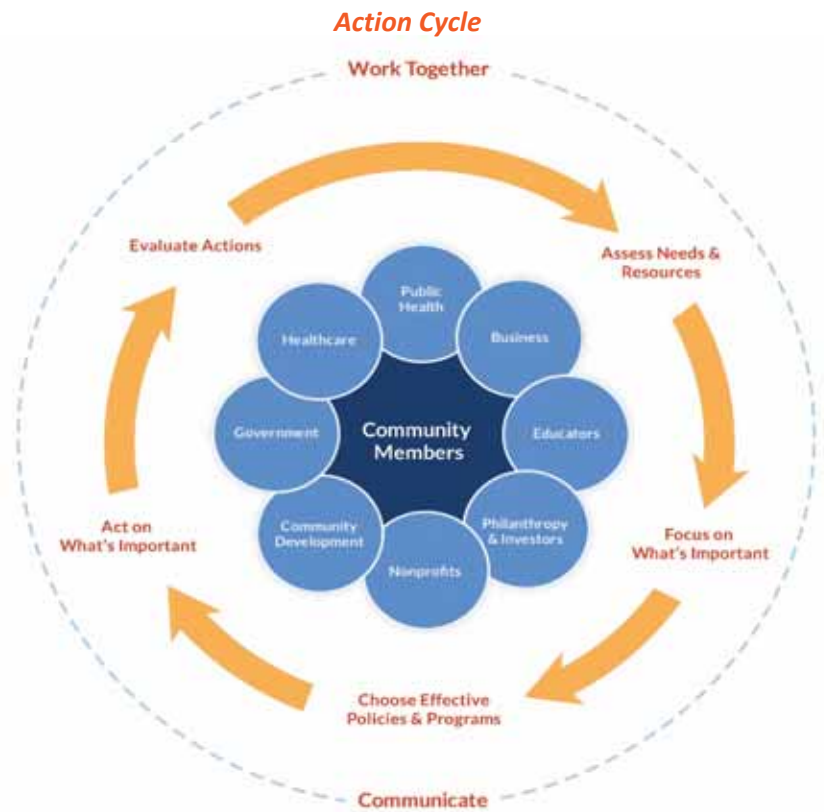
To further explore health gaps and other data sources in your community, check out the feature to [find more data](#) for your state and [dig deeper](#) on differences in health factors by geography or by population sub-groups. Visit countyhealthrankings.org/using-the-rankings-data.

MOVING FROM DATA TO ACTION

Roadmaps to Health help communities bring people together to look at the many factors that influence health and opportunities to reduce health gaps, select strategies that can improve health for all, and make changes that will have a lasting impact. The *Roadmaps* focus on helping communities move from *awareness* about their county's ranking to *actions* designed to improve everyone's health. The *Roadmaps to Health* Action Center is a one-stop shop of information to help any community member or leader who wants to improve their community's health by addressing factors that we know influence health, such as education, income, and community safety.

Within the Action Center you will find:

- Online step-by-step guidance and tools to move through the Action Cycle
- [What Works for Health](#) – a searchable database of evidence-informed policies and programs that can improve health
- Webinars featuring local community members who share their tips on how to build a healthier community
- Community coaches, located across the nation, who provide customized consultation to local leaders who request guidance in how to accelerate their efforts to improve health. You can contact a coach by activating the Get Help button at countyhealthrankings.org



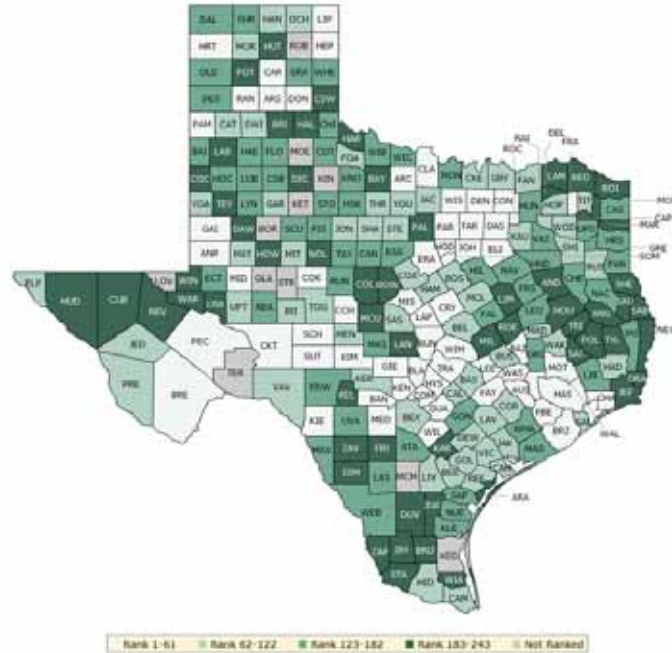
HOW CAN YOU GET INVOLVED?

You might want to contact your local affiliate of United Way Worldwide, the National Association of Counties, Local Initiatives Support Corporation (LISC), or Neighborworks— their national parent organizations have partnered with us to raise awareness and stimulate action to improve health in their local members' communities. By connecting with other leaders interested in improving health, you can make a difference in your community. In communities large and small, people from all walks of life are taking ownership and action to improve health. Visit countyhealthrankings.org to get ideas and guidance on how you can take action in your community. Working with others, you can improve the health of your community.

HOW DO COUNTIES RANK FOR HEALTH OUTCOMES?

The green map below shows the distribution of Texas's **health outcomes**, based on an equal weighting of length and quality of life.

Lighter shades indicate better performance in the respective summary rankings. Detailed information on the underlying measures is available at countyhealthrankings.org.



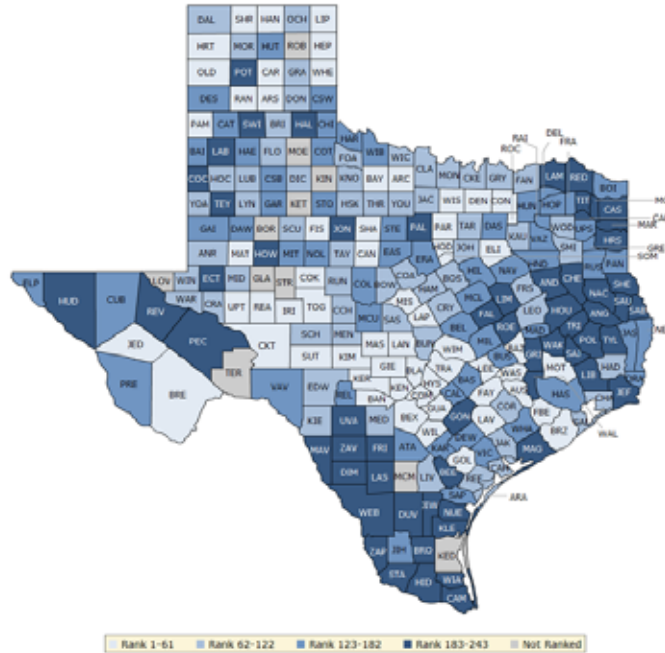
County	Rank	County	Rank	County	Rank	County	Rank
Anderson	183	Donley	34	Kaufman	75	Real	241
Andrews	61	Duval	243	Kendall	10	Red River	225
Angelina	193	Eastland	174	Kenedy	NR	Reeves	188
Aransas	234	Ector	180	Kerr	NR	Refugio	76
Archer	9	Edwards	128	Kimble	14	Roberts	NR
Armstrong	33	El Paso	80	King	NR	Robertson	185
Atascosa	157	Ellis	19	Kinney	59	Rockwall	8
Austin	32	Erath	36	Kleberg	143	Rusk	96
Bailey	147	Falls	156	Knox	141	Sabine	238
Bandera	21	Fannin	73	La Salle	123	San Augustine	242
Bastrop	64	Fayette	17	Lamar	216	San Jacinto	184
Baylor	239	Fisher	178	Lamb	208	San Patricio	153
Bee	120	Floyd	165	Lampasas	43	San Saba	62
Bell	74	Foard	112	Lavaca	71	Schleicher	50
Bexar	78	Fort Bend	7	Lee	44	Scurry	145
Blanco	35	Franklin	37	Leon	160	Shackelford	90
Borden	NR	Freestone	148	Liberty	169	Shelby	224
Bosque	89	Frio	236	Limestone	200	Sherman	142
Bowie	192	Gaines	58	Lipscomb	28	Smith	85
Brazoria	23	Galveston	95	Live Oak	69	Somervell	49
Brazos	16	Garza	97	Llano	191	Starr	207
Brewster	47	Gillespie	25	Loving	NR	Stephens	66
Briscoe	213	Glasscock	NR	Lubbock	167	Sterling	NR
Brooks	240	Goliad	63	Lynn	177	Stonewall	132
Brown	186	Gonzales	182	Madison	68	Sutton	26
Burleson	83	Gray	179				

County	Rank	County	Rank	County	Rank	County	Rank
Burnet	46	Grayson	121	Marion	205	Swisher	109
Caldwell	105	Gregg	170	Martin	102	Tarrant	30
Calhoun	86	Grimes	126	Mason	127	Taylor	161
Callahan	151	Guadalupe	27	Matagorda	164	Terrell	NR
Cameron	108	Hale	154	Maverick	138	Terry	187
Camp	197	Hall	233	McCulloch	199	Throckmorton	100
Carson	13	Hamilton	114	McLennan	115	Titus	98
Cass	176	Hansford	79	McMullen	NR	Tom Green	70
Castro	81	Hardeman	214	Medina	54	Travis	5
Chambers	60	Hardin	119	Menard	113	Trinity	227
Cherokee	149	Harris	52	Midland	38	Tyler	223
Childress	163	Harrison	166	Milam	190	Upshur	140
Clay	56	Hartley	2	Mills	39	Upton	103
Cochran	226	Haskell	155	Mitchell	116	Uvalde	159
Coke	20	Hays	11	Montague	171	Val Verde	67
Coleman	211	Hemphill	31	Montgomery	12	Van Zandt	125
Collin	1	Henderson	181	Moore	92	Victoria	87
Collingsworth	210	Hidalgo	99	Morris	222	Walker	77
Colorado	118	Hill	130	Motley	NR	Waller	45
Comal	18	Hockley	139	Nacogdoches	129	Ward	218
Comanche	117	Hood	40	Navarro	135	Washington	53
Concho	6	Hopkins	107	Newton	195	Webb	124
Cooke	93	Houston	220	Nolan	196	Wharton	144
Coryell	55	Howard	219	Nueces	133	Wheeler	158
Cottle	136	Hudspeth	235	Ochiltree	111	Wichita	150
Crane	203	Hunt	134	Oldham	131	Wilbarger	168
Crockett	41	Hutchinson	194	Orange	206	Willacy	228
Crosby	173	Irion	72	Palo Pinto	189	Williamson	4
Culberson	221	Jack	65	Panola	146	Wilson	29
Dallam	162	Jackson	94	Parker	22	Winkler	204
Dallas	57	Jasper	175	Parmer	15	Wise	42
Dawson	202	Jeff Davis	104	Pecos	51	Wood	122
Deaf Smith	152	Jefferson	209	Polk	230	Yoakum	101
Delta	229	Jim Hogg	232	Potter	212	Young	106
Denton	3	Jim Wells	237	Presidio	84	Zapata	215
DeWitt	91	Johnson	48	Rains	110	Zavala	231
Dickens	201	Jones	82	Randall	24		
Dimmit	198	Karnes	217	Reagan	137		

HOW DO COUNTIES RANK FOR HEALTH FACTORS?

The blue map displays Texas's summary ranks for **health factors**, based on weighted scores for health behaviors, clinical care, social and economic factors, and the physical environment.

Lighter shades indicate better performance in the respective summary rankings. Detailed information on the underlying measures is available at countyhealthrankings.org



County	Rank	County	Rank	County	Rank	County	Rank
Anderson	207	Donley	70	Kaufman	71	Real	159
Andrews	77	Duval	230	Kendall	3	Red River	235
Angelina	228	Eastland	170	Kenedy	NR	Reeves	211
Aransas	108	Ector	215	Kent	NR	Refugio	115
Archer	22	Edwards	113	Kerr	31	Roberts	NR
Armstrong	15	El Paso	155	Kimble	49	Robertson	200
Atascosa	129	Ellis	33	King	NR	Rockwall	7
Austin	36	Erath	180	Kinney	76	Runnels	92
Bailey	134	Falls	221	Kleberg	196	Rusk	169
Bandera	20	Fannin	117	Knox	78	Sabine	234
Bastrop	137	Fayette	29	La Salle	186	San Augustine	239
Baylor	44	Fisher	45	Lamar	197	San Jacinto	222
Bee	218	Floyd	118	Lamb	227	San Patricio	166
Bell	131	Foard	82	Lampasas	58	San Saba	101
Bexar	38	Fort Bend	4	Lavaca	46	Schleicher	66
Blanco	18	Franklin	157	Lee	42	Scurry	85
Borden	NR	Freestone	104	Leon	111	Shackelford	47
Bosque	65	Frio	194	Liberty	220	Shelby	223
Bowie	163	Gaines	152	Limestone	217	Sherman	37
Brazoria	54	Galveston	89	Lipscomb	27	Smith	107
Brazos	55	Garza	140	Live Oak	80	Somervell	40
Brewster	34	Gillespie	6	Llano	43	Starr	243
Briscoe	122	Glasscock	NR	Loving	NR	Stephens	164
Brooks	241	Goliad	39	Lubbock	94	Sterling	NR
Brown	75	Gonzales	191	Lynn	110	Stonewall	130
Burleson	138	Gray	116	Madison	172	Sutton	14

County	Rank	County	Rank	County	Rank	County	Rank
Burnet	93	Grayson	96	Marion	209	Swisher	189
Caldwell	148	Gregg	182	Martin	41	Tarrant	67
Calhoun	109	Grimes	219	Mason	16	Taylor	88
Callahan	56	Guadalupe	28	Matagorda	213	Terrell	NR
Cameron	229	Hale	167	Maverick	238	Terry	212
Camp	206	Hall	210	McCulloch	135	Throckmorton	62
Carson	9	Hamilton	87	McLennan	149	Titus	187
Cass	208	Hansford	53	McMullen	NR	Tom Green	52
Castro	126	Hardeman	144	Medina	91	Travis	12
Chambers	95	Hardin	99	Menard	86	Trinity	204
Cherokee	225	Harris	125	Midland	79	Tyler	190
Childress	128	Harrison	188	Milam	151	Upshur	123
Clay	63	Hartley	13	Mills	61	Upton	57
Cochran	205	Haskell	90	Mitchell	153	Uvalde	185
Coke	24	Hays	25	Montague	83	Val Verde	173
Coleman	179	Hemphill	21	Montgomery	35	Van Zandt	143
Collin	1	Henderson	181	Moore	103	Victoria	139
Collingsworth	150	Hidalgo	233	Morris	195	Walker	226
Colorado	74	Hill	136	Motley	NR	Waller	214
Comal	10	Hockley	97	Nacogdoches	202	Ward	120
Comanche	114	Hood	19	Navarro	154	Washington	60
Concho	73	Hopkins	165	Newton	176	Webb	236
Cooke	84	Houston	198	Nolan	177	Wharton	161
Coryell	121	Howard	184	Nueces	193	Wheeler	48
Cottle	158	Hudspeth	232	Ochiltree	98	Wichita	112
Crane	106	Hunt	142	Oldham	26	Wilbarger	141
Crockett	30	Hutchinson	147	Orange	160	Willacy	242
Crosby	171	Irion	8	Palo Pinto	201	Williamson	2
Culberson	124	Jack	72	Panola	174	Wilson	23
Dallam	119	Jackson	69	Parker	32	Winkler	105
Dallas	127	Jasper	175	Parmer	50	Wise	59
Dawson	168	Jeff Davis	17	Pecos	203	Wood	102
Deaf Smith	146	Jefferson	231	Polk	192	Yoakum	68
Delta	145	Jim Hogg	156	Potter	199	Young	64
Denton	5	Jim Wells	224	Presidio	162	Zapata	237
DeWitt	133	Johnson	81	Rains	132	Zavala	240
Dickens	100	Jones	216	Randall	11		
Dimmit	183	Karnes	178	Reagan	51		

2017 COUNTY HEALTH RANKINGS: MEASURES AND NATIONAL/STATE RESULTS

Measure	Description	US Median	State Overall	State Minimum	State Maximum
HEALTH OUTCOMES					
Premature death	Years of potential life lost before age 75 per 100,000 population	7,700	6,700	4,000	18,200
Poor or fair health	% of adults reporting fair or poor health	16%	19%	11%	42%
Poor physical health days	Average # of physically unhealthy days reported in past 30 days	3.8	3.6	2.7	6.1
Poor mental health days	Average # of mentally unhealthy days reported in past 30 days	3.8	3.2	2.9	4.4
Low birthweight	% of live births with low birthweight (< 2500 grams)	8%	8%	5%	14%
HEALTH FACTORS					
HEALTH BEHAVIORS					
Adult smoking	% of adults who are current smokers	17%	15%	12%	21%
Adult obesity	% of adults that report a BMI ≥ 30	31%	28%	20%	38%
Food environment index	Index of factors that contribute to a healthy food environment, (0-10)	7.3	6.6	0.8	9.6
Physical inactivity	% of adults aged 20 and over reporting no leisure-time physical activity	26%	23%	15%	34%
Access to exercise opportunities	% of population with adequate access to locations for physical activity	62%	84%	0%	98%
Excessive drinking	% of adults reporting binge or heavy drinking	17%	17%	12%	24%
Alcohol-impaired driving deaths	% of driving deaths with alcohol involvement	30%	30%	0%	100%
Sexually transmitted infections	# of newly diagnosed chlamydia cases per 100,000 population	294.8	496.1	87.4	1,087.4
Teen births	# of births per 1,000 female population ages 15-19	38	49	17	124
CLINICAL CARE					
Uninsured	% of population under age 65 without health insurance	14%	21%	13%	35%
Primary care physicians	Ratio of population to primary care physicians	2,030:1	1,670:1	1,960:0	790:1
Dentists	Ratio of population to dentists	2,570:1	1,850:1	3,860:0	1,220:1
Mental health providers	Ratio of population to mental health providers	1,105:1	1,070:1	16,660:1	410:1
Preventable hospital stays	# of hospital stays for ambulatory-care sensitive conditions per 1,000 Medicare enrollees	56	54	30	128
Diabetes monitoring	% of diabetic Medicare enrollees ages 65-75 that receive HbA1c monitoring	86%	84%	64%	95%
Mammography screening	% of female Medicare enrollees ages 67-69 that receive mammography screening	61%	58%	26%	73%
SOCIAL AND ECONOMIC FACTORS					
High school graduation	% of ninth-grade cohort that graduates in four years	88%	89%	55%	100%
Some college	% of adults ages 25-44 with some post-secondary education	57%	60%	18%	80%
Unemployment	% of population aged 16 and older unemployed but seeking work	5.3%	4.5%	2.1%	13.6%
Children in poverty	% of children under age 18 in poverty	22%	23%	8%	47%
Income inequality	Ratio of household income at the 80th percentile to income at the 20th percentile	4.4	4.9	3.2	7.3
Children in single-parent households	% of children that live in a household headed by a single parent	32%	33%	4%	67%
Social associations	# of membership associations per 10,000 population	12.6	7.7	1.6	31.8
Violent crime	# of reported violent crime offenses per 100,000 population	198	408	9	848
Injury deaths	# of deaths due to injury per 100,000 population	77	54	29	155
PHYSICAL ENVIRONMENT					
Air pollution – particulate matter	Average daily density of fine particulate matter in micrograms per cubic meter (PM2.5)	9.2	8.0	5.8	12.0
Drinking water violations	Indicator of the presence of health-related drinking water violations. Yes - indicates the presence of a violation, No - indicates no violation.	NA	NA	No	Yes
Severe housing problems	% of households with overcrowding, high housing costs, or lack of kitchen or plumbing facilities	14%	18%	5%	32%
Driving alone to work	% of workforce that drives alone to work	81%	80%	55%	91%
Long commute – driving alone	Among workers who commute in their car alone, % commuting > 30 minutes	30%	36%	7%	64%

2017 COUNTY HEALTH RANKINGS: DATA SOURCES AND YEARS OF DATA

	Measure	Data Source	Years of Data
HEALTH OUTCOMES			
Length of Life	Premature death	National Center for Health Statistics – Mortality files	2012-2014
Quality of Life	Poor or fair health	Behavioral Risk Factor Surveillance System	2015
	Poor physical health days	Behavioral Risk Factor Surveillance System	2015
	Poor mental health days	Behavioral Risk Factor Surveillance System	2015
	Low birthweight	National Center for Health Statistics – Natality files	2008-2014
HEALTH FACTORS			
HEALTH BEHAVIORS			
Tobacco Use	Adult smoking	Behavioral Risk Factor Surveillance System	2015
Diet and Exercise	Adult obesity	CDC Diabetes Interactive Atlas	2013
	Food environment index	USDA Food Environment Atlas, Map the Meal Gap	2010 & 2014
	Physical inactivity	CDC Diabetes Interactive Atlas	2013
	Access to exercise opportunities	Business Analyst, Delorme map data, ESRI, & US Census Tigerline Files	2010 & 2014
Alcohol and Drug Use	Excessive drinking	Behavioral Risk Factor Surveillance System	2015
	Alcohol-impaired driving deaths	Fatality Analysis Reporting System	2011-2015
Sexual Activity	Sexually transmitted infections	National Center for HIV/AIDS, Viral Hepatitis, STD, and TB Prevention	2014
	Teen births	National Center for Health Statistics - Natality files	2008-2014
CLINICAL CARE			
Access to Care	Uninsured	Small Area Health Insurance Estimates	2014
	Primary care physicians	Area Health Resource File/American Medical Association	2014
	Dentists	Area Health Resource File/National Provider Identification file	2015
	Mental health providers	CMS, National Provider Identification file	2016
Quality of Care	Preventable hospital stays	Dartmouth Atlas of Health Care	2014
	Diabetes monitoring	Dartmouth Atlas of Health Care	2014
	Mammography screening	Dartmouth Atlas of Health Care	2014
SOCIAL AND ECONOMIC FACTORS			
Education	High school graduation	EDFacts ¹	2014-2015
	Some college	American Community Survey	2011-2015
Employment	Unemployment	Bureau of Labor Statistics	2015
Income	Children in poverty	Small Area Income and Poverty Estimates	2015
	Income inequality	American Community Survey	2011-2015
Family and Social Support	Children in single-parent households	American Community Survey	2011-2015
	Social associations	County Business Patterns	2014
Community Safety	Violent crime	Uniform Crime Reporting – FBI	2012-2014
	Injury deaths	CDC WONDER mortality data	2011-2015
PHYSICAL ENVIRONMENT			
Air and Water Quality	Air pollution - particulate matter ²	CDC National Environmental Public Health Tracking Network	2012
	Drinking water violations	Safe Drinking Water Information System	FY2013-14
Housing and Transit	Severe housing problems	Comprehensive Housing Affordability Strategy (CHAS) data	2009-2013
	Driving alone to work	American Community Survey	2011-2015
	Long commute – driving alone	American Community Survey	2011-2015

¹ State sources used for California and Texas.

² Not available for AK and HI.

CREDITS

Report Authors

University of Wisconsin-Madison
School of Medicine and Public Health
Department of Population Health Sciences
Population Health Institute

Marjory Givens, PhD, MSPH
Amanda Jovaag, MS
Julie Willems Van Dijk, PhD, RN

Suggested citation: University of Wisconsin Population Health Institute. *County Health Rankings 2017*.

This publication would not have been possible without the following contributions:

Data

Centers for Disease Control and Prevention: National Center for Health Statistics and National Center for Chronic Disease and Health Promotion
Dartmouth Institute for Health Policy & Clinical Practice
Measure of America

Research Assistance

Paige Andrews
Keith Gennuso, PhD
Kathryn Hatchell
Melissa Marver
Elizabeth Pollock
Jennifer Robinson
Matthew Rodock, MPH
Anne Roubal, MS, PhD

Design and Communications

Forum One, Alexandria, VA
Burness
Kim Linsenmayer, MPA
Matthew Call

Communications and Outreach

Kate Kingery, MPA
Kitty Jerome, MA
Kate Konkle, MPH
Mary Bennett, MFA
Raquel Bournhonesque, MPH
Ericka Burroughs-Girardi, MA, MPH
Aliana Havrilla, MPA
Antonia Lewis, MPH, HO
Karen Odegaard, MPH
Jan O'Neill, MPA
Justin Rivas, MPH, MIPA
Attica Scott, MS
Jerry Spegman, JD
Janna West Kowalski, MS

Robert Wood Johnson Foundation

County Health Rankings & Roadmaps

Building a Culture of Health, County by County

countyhealthrankings.org



University of Wisconsin Population Health Institute
610 Walnut St, #527, Madison, WI 53726
(608) 265-8240 / info@countyhealthrankings.org