



East Texas
Human Needs Network

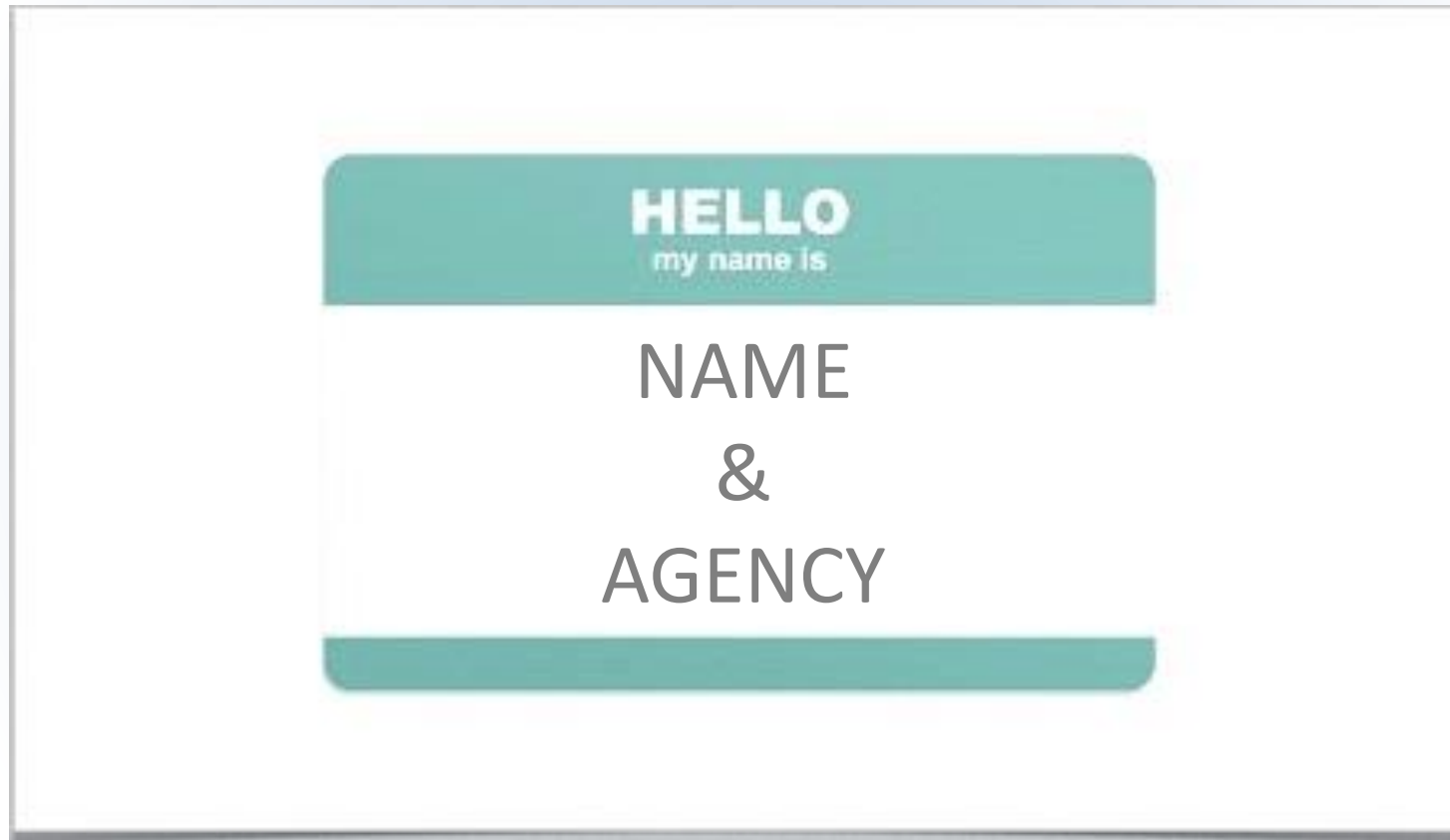
EDUCATION
May 9, 2017

Agenda



- Welcome
- Introductions
- Mission, our commitment, and collaboration
- GED
- Computer Classes
- Universal Assessment
- Directory
- Updates
- Close

Introductions at your table



Diverse organizations and individuals working together for strengthened programs, connection and improved awareness of services that meet essential human needs.

Mission



Diverse organizations and individuals working together for strengthened programs, connection and improved awareness of services that meet essential human needs.

Diverse organizations and individuals working together for strengthened programs, connection and improved awareness of services that meet essential human needs.

Our Commitment



We are committed to creating sustainable solutions to poverty by providing the guidance and structure needed for collective impact

Diverse organizations and individuals working together for strengthened programs, connection and improved awareness of services that meet essential human needs.

Collaboration



... a PURPOSEFUL,
STRATEGIC way of WORKING
that leverages the RESOURCES of each party
for the BENEFIT OF ALL
by COORDINATING ACTIVITIES and COMMUNICATING
INFORMATION
within an environment
of TRUST AND TRANSPARENCY.

Diverse organizations and individuals working together for strengthened programs, connection and improved awareness of services that meet essential human needs.

Education Council



KEY INDICATOR

No high school diploma 22%

TOP NEEDS

1. GED or High School Diploma
2. Adult Basic Education
3. Computer Classes

Education Council Chair:

PAMELA RODRIGUEZ

University of Texas at Tyler

Admissions Counselor/Community Liaison



Education

Employment

Healthcare

Housing

Transportation

Bridges

GED Programs – Smith County



- The Literacy Council of Tyler
 - Catholic Charities of East Texas
 - The Goodwill Industries of East Texas
-
- Awareness?
 - Accessible?
 - Schedule
 - Location
 - Scalability

Education

Employment

Healthcare

Housing

Transportation

Bridges

Computer Classes



- **Tyler ISD Title I Parenting Program**
parents of students attending Title I schools.
- The **Christian Women's Job Corps** has a strong curriculum geared to improve computation skills utilizing Microsoft Office Suite.
- **The City of Tyler – Public Library** 1st & 3rd Saturdays of every month. 9-10 am Basic keyboarding, e-mail set up, job searching skills.
 - Awareness?
 - Accessible?
 - Schedule
 - Location
 - Scalability
 - Language

Education

Employment

Healthcare

Housing

Transportation

Bridges

Education Initiatives



- FAFSA SuperSaturday
- Tyler Area Partnership for Education
- Bilingual Parent Academy

Education

Employment

Healthcare

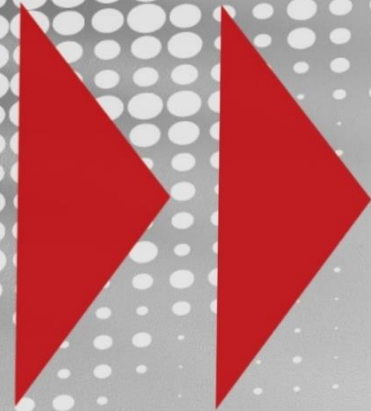
Housing

Transportation

Bridges



TAKE THE \$ STEP



A JOB SKILLS EVENT

Want to join the committee?

Cloud-based solutions



CIVICHEALTH



Education

Employment

Healthcare

Housing

Transportation

Bridges

Service Directory



- The Service Directory is an online resource that allows organizations to list the services they provide in a community.
- This allows the public to search for services, resources, and organizations that they can reach out to for information and help.



CharityTracker™

Education

Employment

Healthcare

Housing

Transportation

Bridges

Service Directory



- The directory would be linked with CharityTracker so that agencies in the same network with ETHNN could enter their services in CharityTracker and have them automatically published to the public directory.
- In addition, access would be provided for agencies not using CharityTracker to enter and update their information in the directory.



Education

Employment

Healthcare

Housing

Transportation

Bridges



Dial 2-1-1

from any phone to talk with someone about essential services in your area.

When should I call 2-1-1?

Dial 9-1-1

from any phone to talk with someone if you are in an emergency situation.

When should I call 9-1-1?

Type your need here (e.g. food, counseling, medical)

Search

Click Sections For Help

Abuse/Neglect

Children and Youth

Churches

City of Stillwater

Clothing

Counseling

Disabilities

Education

Elderly

Emergency

Employment

Food

Health Care

Helpline

Hotline

Household

Housing

Incarceration

Legal

Personal Items

Recreation

Substance Abuse

Support Group

Transportation

Utility Assistance

Veterans

Volunteer

Service Directory



- ETHNN members will complete a simple Excel worksheet and data will be imported.
- At any point, agencies can edit their agency's information.

Education

Employment

Healthcare

Housing

Transportation

Bridges

Service Directory



- Cost: \$4,600
- Ready: 4 – 6 weeks from contract date.
- Public: Free
- Agencies (1): Free
 - Enter agency information
- Agencies (2): \$30 per user per month
 - Full use of Charity Tracker for case management, referrals, and tracking.

Education

Employment

Healthcare

Housing

Transportation

Bridges

Universal Assessment Integration



- Integration of a universal assessment that any user can perform directly within the Service Directory.
- The assessment asks a series of questions to identify and assess the needs of the individual. Once the assessment is complete, the system will analyze the person's answers and display the relevant organizations that can provide assistance.

Education

Employment

Healthcare

Housing

Transportation

Bridges

Universal Assessment



- Councils will review each domain.
- Domains will be finalized.
- Decision tree will be established to determine appropriate referral.

Education

Employment

Healthcare

Housing

Transportation

Bridges

Domain	Scale
1. Income	<p data-bbox="1122 319 1483 372">1 = In Crisis</p> <p data-bbox="1122 501 1557 554">2 = Vulnerable</p> <p data-bbox="1122 682 1363 735">3 = Safe</p> <p data-bbox="1122 863 1773 916">4 = Building Capacity</p> <p data-bbox="1122 1045 1595 1098">5 = Empowered</p>
2. Employment	
3. Housing	
4. Food	
5. Childcare	
6. Children's Education	
7. Adult Education	
8. Legal	
9. Health Care	
10. Life Skills	
11. Mental Health	
12. Substance Abuse	
13. Family Relations	
14. Mobility	
15. Community Involvement	
16. Safety	
17. Parenting Skills	
18. Credit (Optional)	

Using the Universal Assessment



There are 17 Domains.

ETHNN might not use all of them.

- *When to use it:*
 - Upon any program entry and at program exit.
 - At least once per year
- *Subjects:*
 - All persons over the age of 16
 - INDIVIDUALS CAN CONDUCT THEIR OWN SELF-ASSESSMENT.

Education

Employment

Healthcare

Housing

Transportation

Bridges

Using the Universal Assessment



There are 17 Domains.

ETHNN might not use all of them.

- *When to refer:*
 - When score is CRISIS (1) or VULNERABLE (2) in any domain; only when participant is ready.
 - When participant doesn't have a medical home.
- *How to refer:*
 - *Utilize Directory to identify the resource*

Education

Employment

Healthcare

Housing

Transportation

Bridges



Self-Assessment

- Individuals can conduct their own self-assessment. In this case it would be a simple checklist instead of an interview decision-tree.
- Recommendations for Level 1 & 2.

7) Adult Education Assessment

<input type="radio"/>	1	Literacy problems and/or no high school diploma/GED are serious barriers to employment.
<input type="radio"/>	2	Enrolled in literacy and/or GED program and/or has sufficient command of English to where language is not a barrier to employment.
<input type="radio"/>	3	Has high school diploma/GED.
<input type="radio"/>	4	Needs additional education/training to improve employment situation and/or to resolve literacy problems to where they are able to function effectively in society.
<input type="radio"/>	5	Has completed education/training needed to become employable. No literacy problems.

Education

Employment

Healthcare

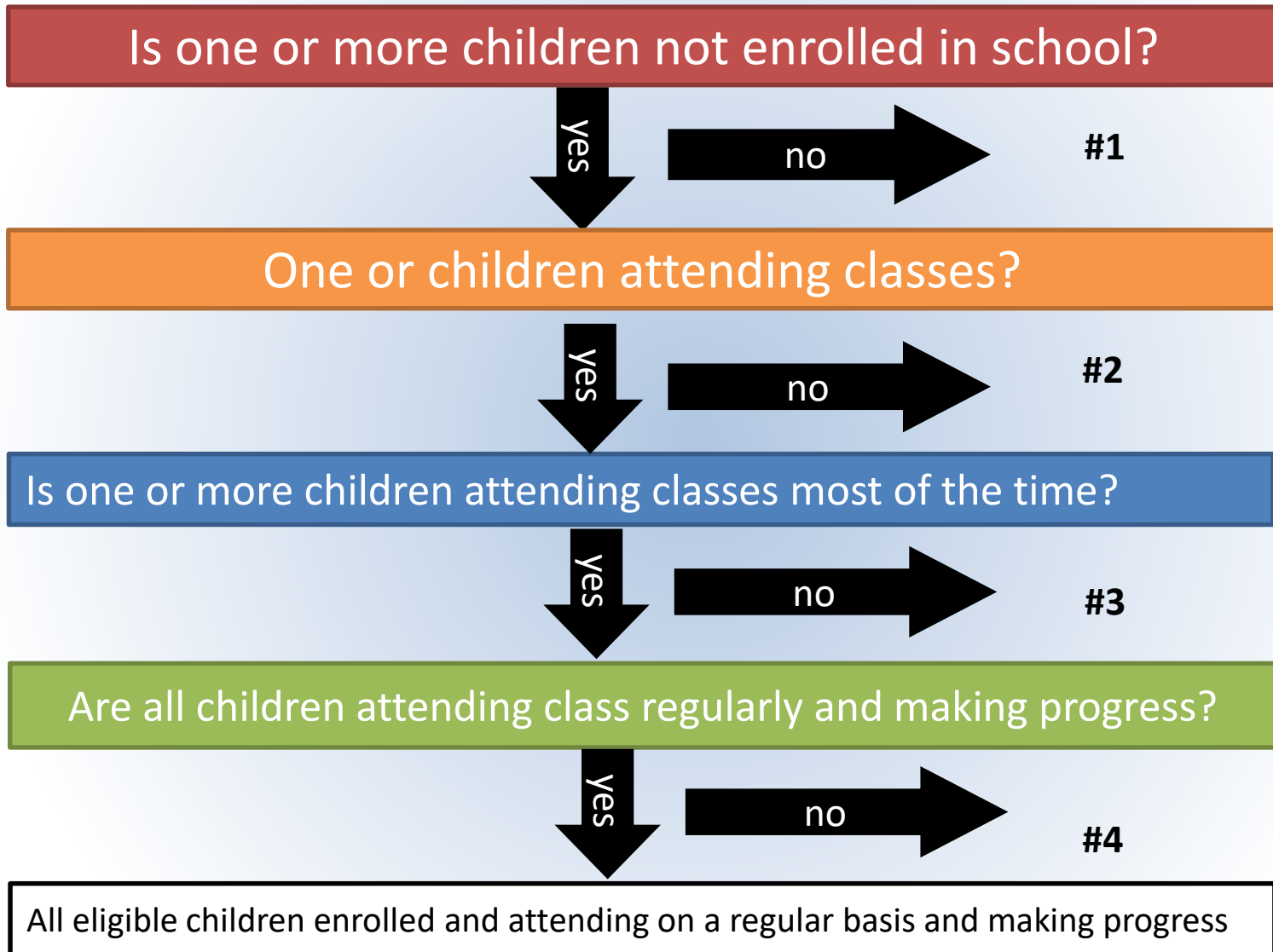
Housing

Transportation

Bridges

LEVEL	CHILDREN'S EDUCATION
1	One or more eligible children not enrolled in school
2	One or more eligible children enrolled in school but not attending classes
3	Enrolled in school, but one or more children only occasionally attending classes
4	Enrolled in school and attending classes most of the time
5	All eligible children enrolled and attending on a regular basis and making progress.

Self-Determination and Skills – Children’s Education



#5

LEVEL	ADULT EDUCATION
1	Literacy problems and/or no high school diploma/GED are serious barriers to employment
2	Enrolled in literacy and/or GED program and/or has sufficient command of English to where language is not a barrier to employment
3	Has high school diploma/GED
4	Needs additional education/training to improve employment situation and/or to resolve literacy problems to where they are able to function effectively in society
5	Has completed education/training needed to become employable. No literacy problems

Self-Determination and Skills – Adult Education

Does client have a high school diploma or GED?

yes

no

#1

Is literacy a serious barrier to employment?

yes

no

#2

Does client have the education/literacy skills to function effectively in society?

yes

no

#3

Has the client completed education/training needed to become employable?

yes

no

#4

No literacy problems.

#5



Bridges Community

Education

Employment

Healthcare

Housing

Transportation

Bridges

Schedule Poverty Education Training



- **POVERTY SIMULATION**
- **BRIDGES OUT OF POVERTY**
- **FRAMEWORK FOR UNDERSTANDING POVERTY**
- **GETTING AHEAD**

Sheila Thrash
903.216.3211
Sheila@ethnn.org

RETHINK
POVERTY

ethnn.org

Education

Employment

Healthcare

Housing

Transportation

Bridges

Information Sharing



Share the news!

1. WHAT?
2. WHEN?
3. WHERE?
4. CONTACT?

Activities more than 30 days away,
share online at
www.ethnn.org/information-sharing

Diverse organizations and individuals working together for strengthened programs, connection and improved awareness of services that meet essential human needs.



-
- The Summer Sensation packets contain 5 scholastic reading books, a bridge workbook (that covers material from the grade the student is in now along with material for the following year), and various summer event flyers and coupons from local businesses and organizations.
 -
 - These packets are available for current Kindergarten to 7th grade students at Tyler ISD Title 1 schools. Parents must call our office to request it. (903) 262-1209, (903) 262-1218, and (903) 262-1210.



Diverse organizations and individuals working together for strengthened programs, connection and improved awareness of services that meet essential human needs.



Diverse organizations and individuals working together for strengthened programs, connection and improved awareness of services that meet essential human needs.

Council Meetings



JUNE 13

Education	10 – 12
Employment	1 - 3

JUNE 20

Healthcare	10 – 12
Housing	1 – 3

JUNE 27

Transportation	1 – 3
----------------	-------



Education

Employment

Healthcare

Housing

Transportation

Bridges