



East Texas
Human Needs Network

February 9, 2015

Agenda



- Welcome
- Introductions
- Data
- Break-out into Committees
- Updates and announcements
- Close

Introductions



Diverse organizations and individuals working together for strengthened programs, connection and improved awareness of services that meet essential human needs.

Collaboration



... a **PURPOSEFUL,**
STRATEGIC way of **WORKING**
that leverages the **RESOURCES** of each party
for the **BENEFIT OF ALL**
by **COORDINATING ACTIVITIES** and **COMMUNICATING**
INFORMATION
within an environment
of **TRUST AND TRANSPARENCY.**

Diverse organizations and individuals working together for strengthened programs, connection and improved awareness of services that meet essential human needs.

Vision



A community with
equitable access for all.

Diverse organizations and individuals working together for strengthened programs, connection and improved awareness of services that meet essential human needs.

Mission



Diverse organizations and individuals working together for strengthened programs, connection and improved awareness of services that meet essential human needs.

2013 Community Assessment



EDUCATION

- 33% no high school diploma or GED

EMPLOYMENT

- 42% unemployed

HEALTHCARE

- 44% no health insurance

HOUSING

- 12% homeless

TRANSPORTATION

- 34% no reliable transportation

- School tuition

EMPLOYMENT

- Career and job training

HEALTHCARE

- Health Insurance
- Dental care

HOUSING

- Utility assistance

TRANSPORTATION

- Gasoline

Diverse organizations and individuals working together for strengthened programs, connection and improved awareness of services that meet essential human needs.

Vision & Action Plans



Education

- All children and adults have access to quality educational opportunities.

Employment

- Everyone has access to employment that pays a living wage.

Healthcare

- Everyone has access to quality affordable healthcare.

Housing

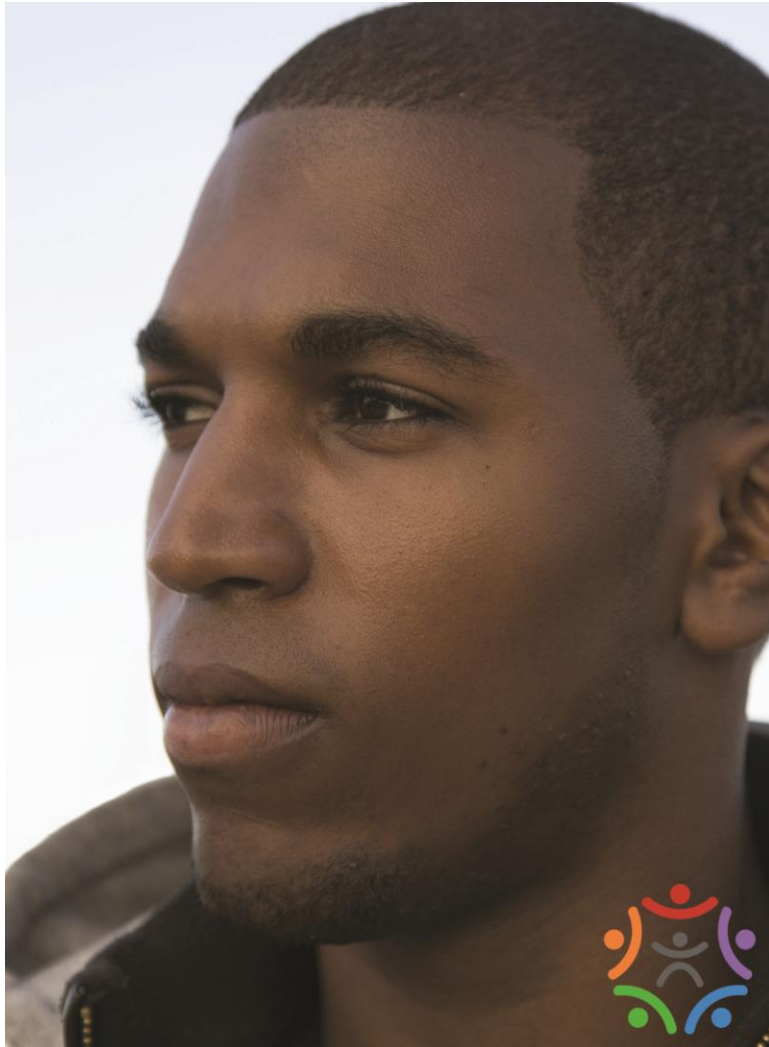
- Families and individuals have access to safe and affordable homes.

Transportation

- Everyone has access to reliable, accessible and affordable transportation.

Diverse organizations and individuals working together for strengthened programs, connection and improved awareness of services that meet essential human needs.

Education Needs - GED



GED & HS Diploma was ranked #2 under Education.

- 100% Without GED or HS Diploma
- 72% Some HS
- 28% Less than 8th grade
- 51% Unemployed
- 60% Have Minor Children
- 11% Participate in Literacy Council Classes

How do we expand the accessibility of GED Programs for impoverished and vulnerable populations?

Diverse organizations and individuals working together for strengthened programs, connection and improved awareness of services that meet essential human needs.

Employment Needs - TRAINING



Career and Job Training was ranked #1 under Employment and #11 overall

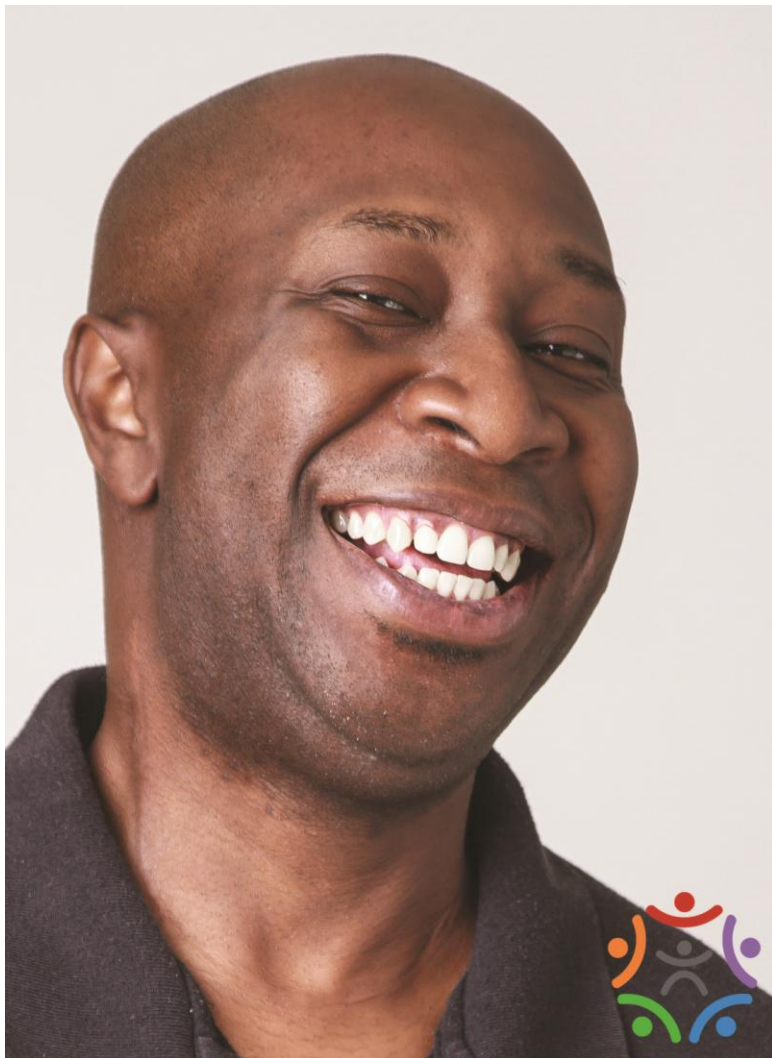
Age:	14%	Under 25
	85%	25 – 65
	1%	Over 65

38%	Without GED or HS Diploma
59%	Unemployed
14%	Homeless

What career and job training programs are available to impoverished and vulnerable populations?

Diverse organizations and individuals working together for strengthened programs, connection and improved awareness of services that meet essential human needs.

Healthcare Needs - VISION



Vision Care was ranked #2 need under healthcare and # 4 need overall.

Age:	8%	Under 25
	40%	25 – 65
	52%	Over 65

30%	Without GED or HS Diploma
52%	Unemployed
18%	Homeless

What vision care programs are available to impoverished and vulnerable populations?

Diverse organizations and individuals working together for strengthened programs, connection and improved awareness of services that meet essential human needs.

Housing Needs – AFFORDABLE



Need affordable housing

12% Homeless

14% At risk of homelessness

43% Need utility assistance

37% Need mortgage or rent assistance

What affordable housing programs are available to impoverished and vulnerable populations?

Diverse organizations and individuals working together for strengthened programs, connection and improved awareness of services that meet essential human needs.

Transportation Needs -



34% Need a vehicle.

31% report losing a job or not accepting one due to unreliable transportation.

As many as 25% drive without a license, insurance, and inspections.

25% need vehicle repairs.

How do we help people get to work, daycare, doctor, grocery stores?

Diverse organizations and individuals working together for strengthened programs, connection and improved awareness of services that meet essential human needs.

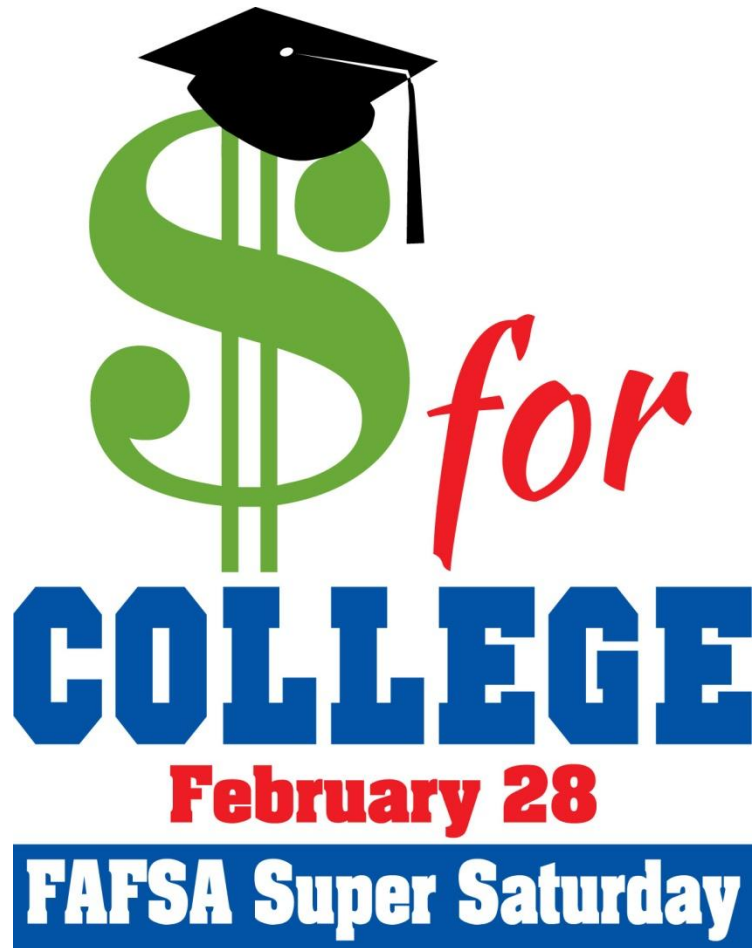


COMMITTEE BREAK-OUT SESSIONS

1 HOUR

Diverse organizations and individuals working together for strengthened programs, connection and improved awareness of services that meet essential human needs.

FAFSA Super Saturday



SATURDAY, FEBRUARY 28
9:00 AM - 2:00 PM

FOUR LOCATIONS

Robert E. Lee High School

John Tyler High School

Tyler Public Library

Hispanic Services Center

Diverse organizations and individuals working together for strengthened programs, connection and improved awareness of services that meet essential human needs.

BRIDGES OUT OF POVERTY



Full Day Workshop

April 14

8:30 – 4:30

Hollytree Country Club

Tyler, TX

Registration will open soon!

Volunteer Income Tax Assistance



January 28 – April 15

Wednesdays

3 – 6

Saturdays

9 – 12 noon

Earn it!
Keep it!
Grow it!



No Appointment Necessary

Volunteer Income Tax Assistance Program

402 W. Front St., Tyler

Diverse organizations and individuals working together for strengthened programs, connection and improved awareness of services that meet essential human needs.

HHSC Provider Training



February 12, 2015

**Community First Choice
10-11:30am**

**Nursing Facility
1-4pm**

Community Connections Building

501 Pine Tree Rd
Longview, TX 75604

Free provider training sessions to offer information on and respond to questions about the following three Medicaid managed care initiatives that HHSC will implement March 1, 2015:

1. Community First Choice (CFC)
2. Texas Dual Eligibles Integrated Care Demonstration Project (Dual Demonstration)
3. the inclusion of nursing facility services in STAR+PLUS managed care program



Diverse organizations and individuals working together for strengthened programs, connection and improved awareness of services that meet essential human needs.

TISD Head Start 2015 – 2016

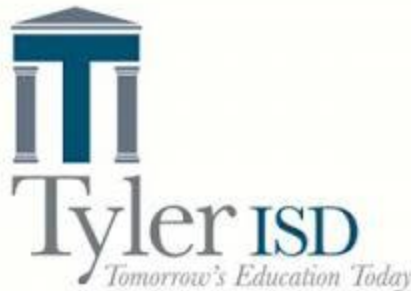


ACCEPTING APPLICATIONS

February 17 – April 30

Child must be 4 years old
by September 1, 2015

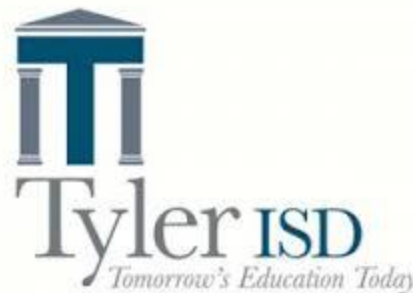
903.262.1180



TISD Poverty Simulation



If you've participated in a poverty simulation,
we need you!



Volunteer for Poverty Simulation

Charlotte Tharp

903-952-4013

Diverse organizations and individuals working together for strengthened programs, connection and improved awareness of services that meet essential human needs.

Your Updates & Announcements



Please share agency information that would be **helpful to other service providers and the clients they serve!**

1. WHAT?
2. WHEN?
3. WHERE?
4. CONTACT?

Activities more than 30 days away,
share online at
www.ethnn.org/information-sharing

Share the news!





FEEDBACK FORM



Please write down your comments and suggestions

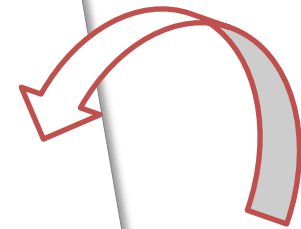
If you want me to contact you, please complete the following:

Date:

Name:

Phone #:

Email address:



Now
or

Send feedback anytime at
www.ethnn.org/we-are-listening

We are listening!





Diverse organizations and individuals working together for strengthened programs, connection and improved awareness of services that meet essential human needs.

See you next month!



Monday, March 9

1:00 – 3:00 pm

The Salvation Army Multipurpose Room

Tyler, TX

Please register online

Diverse organizations and individuals working together for strengthened programs, connection and improved awareness of services that meet essential human needs.