

**BE CURIOUS,**  
NOT JUDGMENTAL.

*Walt Whitman*



East Texas  
Human Needs Network



East Texas  
Human Needs Network

**July 15, 2019**  
**Smith County**

# AGENDA

Welcome and  
Introductions

Updates

Councils  
Break-Out

Councils  
Report

Organizational  
Announcements

Close



East Texas  
Human Needs Network

HELLO  
my name is

# MISSION

Diverse organizations and individuals working together for strengthened programs, connection and improved awareness of services that meet essential human needs.



East Texas  
Human Needs Network

# COLLABORATION ...

... a PURPOSEFUL,

STRATEGIC way of WORKING

that leverages the RESOURCES of each party

for the BENEFIT OF ALL

by COORDINATING ACTIVITIES and COMMUNICATING  
INFORMATION

within an environment

of TRUST AND TRANSPARENCY.



East Texas  
Human Needs Network

JAN 31  
2020

# IT'S ALL ABOUT RELATIONSHIPS



DO YOU HAVE FRIENDS THAT DON'T  
LOOK LIKE YOU?

HOW DID YOU DEVELOP A FRIENDSHIP  
WITH THEM?

## 2010 Census: Racial diversity in Smith County

This map illustrates the population of Smith County by placing a colored dot for each individual in the 2010 census. Dots are colored by race. The City of Tyler is outlined in blue.

Read more: [Hack Tyler](#)

### City of Tyler

Race	Population	Percent
Asian	1,807	1.9%
Black	23,742	24.2%
Hispanic	20,511	21.2%
White	49,252	50.8%
Total*	96,900	100%

\* Total population includes Native Americans, those who reported as being of multiple races, and others who are not represented on the map.

Search for an address:

Implementation: [Christopher Groskopf](#)

Map style: [Chicago Tribune News Applications](#)

Data source: [U.S. Census Bureau](#)





# COLLECTIVE ACTION

---

WHEN WE WORK TOGETHER TOWARD  
SHARED GOALS, WE CAN SOLVE THE  
COMPLEX CHALLENGES THAT IMPACT  
OUR COMMUNITY



# 2019 Comprehensive Community Needs Assessment



East Texas  
Human Needs Network



1

Training

[Training Video](#)

[Training Document](#)

[Practice Survey](#)



2

Quizzes

[CITI PROGRAM](#)

Once you've completed the training you will need to set up a CITI PROGRAM account, study and pass quizzes for four modules. Click above for instructions.



3

Interviewer Login

Once you've completed the CITI PROGRAM, please email your CITI username and password to [dengel@patriots.utt Tyler.edu](mailto:dengel@patriots.utt Tyler.edu).

You will then receive Interviewer Login to the live 2019 CCNA Survey.

**Survey will be "live" on**

[WWW.ETHNN.ORG/INTERVIEWERS](http://WWW.ETHNN.ORG/INTERVIEWERS)

# Behavioral Health Services Report

Christina Fulsom



East Texas  
Human Needs Network



# Community-based prevention services

- Teen pregnancy
- Bullying
- Underage and binge drinking
- Smoking
- Suicide
- Prescription/over-the-counter drug misuse
- Parenting/family support
- Behavioral health stigma
- Marijuana, meth, and other drug use

PREVENTION SERVICES	Andrews Center	Department of Veterans Health Administration	NAMI – National Alliance on Mental Illness	Next Step Community Solutions	New Creation Foundation	Recovery Oriented System of Care	Samaritan County	Tyler Lip
Teen Pregnancy								x
Bullying	x						x	x
Underage and Binge Drinking	x			x			x	x
Smoking	x	x			x		x	x
Suicide	x	x	x			x	x	x
Prescription/over-the-counter drug misuse	x	x		x	x		x	x
Parenting / family support	x	x	x	x		x	x	x
Behavioral health stigma	x	x	x	x		x	x	
Marijuana, meth, and other drug use	x	x		x	x	x		

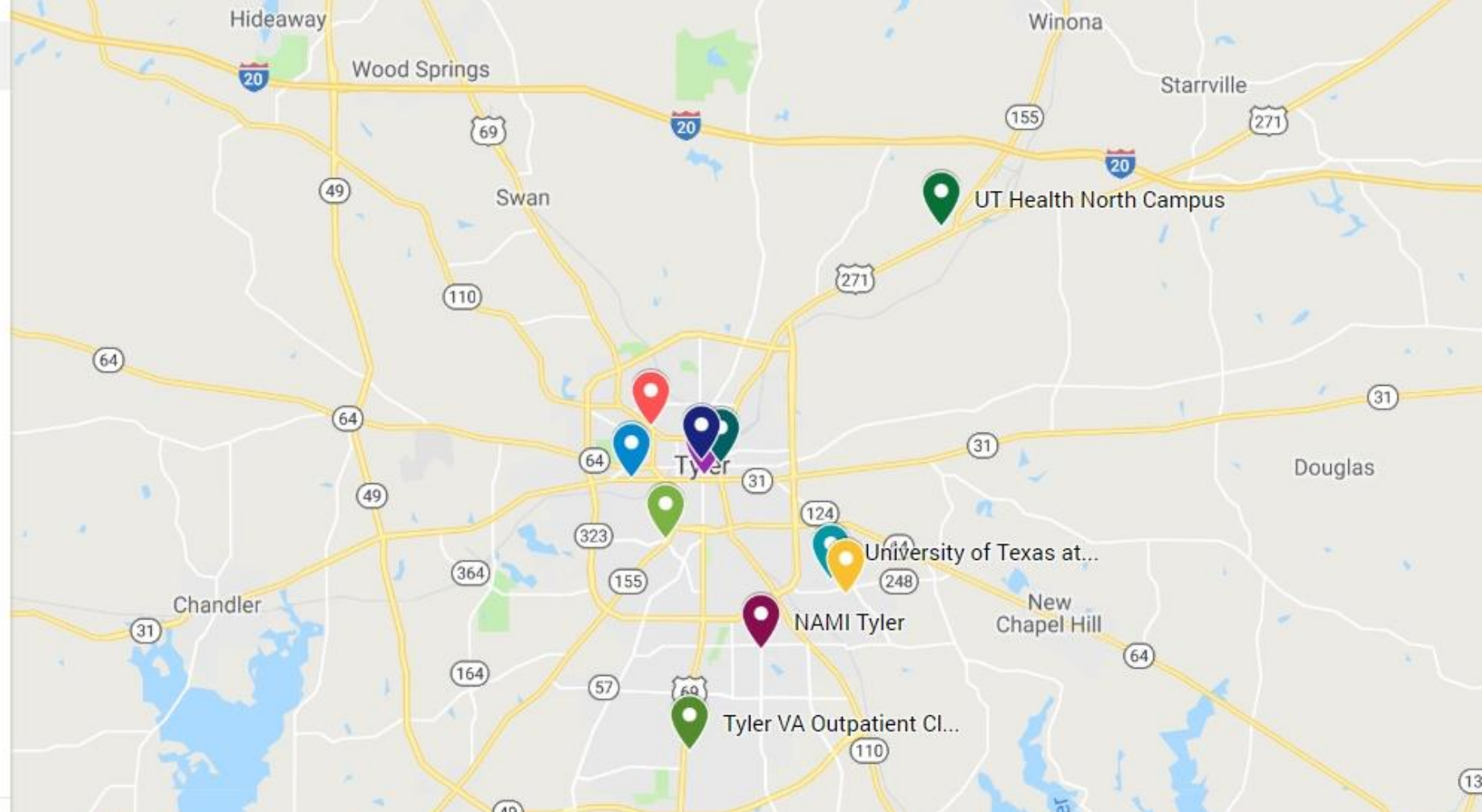


Add layer Share Preview

Provider locations and ages serve...

Styled by Organization

- Andrews Center (1)
- Cenikor Foundation (1)
- NAMI Tyler (1)
- New Creation Foundation (1)
- Next Step Community Soluti... (1)
- Recovery Oriented Systems ... (1)
- Samaritan Counseling Cente... (1)
- Tyler Independent School Di... (1)
- Tyler VA Outpatient Clinic (1)
- UT Health North Campus (1)
- University of Texas Health E... (1)
- University of Texas at Tyler (1)



[www.ethnn.org/healthcare.html](http://www.ethnn.org/healthcare.html)  
under Latest Reports

Baxter new YORK

Teaselville

Bullard

16

New Creation Foundation Group



# UNDERSTANDING POVERTY

POVERTY IS THE EXTENT TO WHICH AN  
INDIVIDUAL DOES WITHOUT  
RESOURCES.

*Dr. Ruby Payne*



# Public classes 2019

- **Bridges Out of Poverty**

– 8/22            8:30 – 4:30

– 11/6            1:30 – 5:00    &    11/7    8:30 – 12:00

- **Poverty Simulation**

– 9/6              9:00 – 12:00

– 10/17           1:30 – 4:30

– 11/1            9:00 – 12:00

REGISTER  
[ETHNN.ORG/EVENTS](http://ETHNN.ORG/EVENTS)



East Texas  
Human Needs Network

**GETTING  
AHEAD**  
EAST TEXAS



# Fall 2019

*Classes forming NOW!*

## GETTING AHEAD



- Morning Women's Getting Ahead Classes (English) - Tyler
- Morning Women's Getting Ahead Class (Spanish) - Tyler
- Evening Co-Ed Getting Ahead Class (English) – Tyler
- Morning Getting Ahead Class (English) – Jacksonville
- Getting Ahead While Getting Out (separate men's and women's classes) - Location TBD
- College Student Pilot Program with Tyler Junior College

[www.ethnn.org/Getting-Ahead](http://www.ethnn.org/Getting-Ahead)



# COLLEGE ACHIEVEMENT ALLIANCE

- Understanding and Engaging Under-Resourced College Students
- Investigations into Economic Class in America





**BRIDGES TO  
WORKPLACE  
STABILITY**





# BRIDGES TO HEALTH AND HEALTHCARE

**NET HEALTH**  
NORTHEAST TEXAS PUBLIC HEALTH DISTRICT



**TEXAS**  
Health and Human  
Services


Texas Department of State  
Health Services

**St. Paul**  
Children's Foundation





**903** **HELP.ORG**

powered by 



**903** **HELP.ORG**

powered by 



**903** **HELP.ORG**

# BREAK-OUT SESSIONS

## EDUCATION



Pam Rodriguez  
Doug Clark

## EMPLOYMENT



Kim Lewis  
Mike Taliaferro

## HEALTH



Carlton Allen  
Susan Rodriguez

## HOUSING



Gloria Bell  
Sherry Skinner

## TRANSPORTATION



Kristy Swan Range  
Vince Huerta



# REPORTS

---



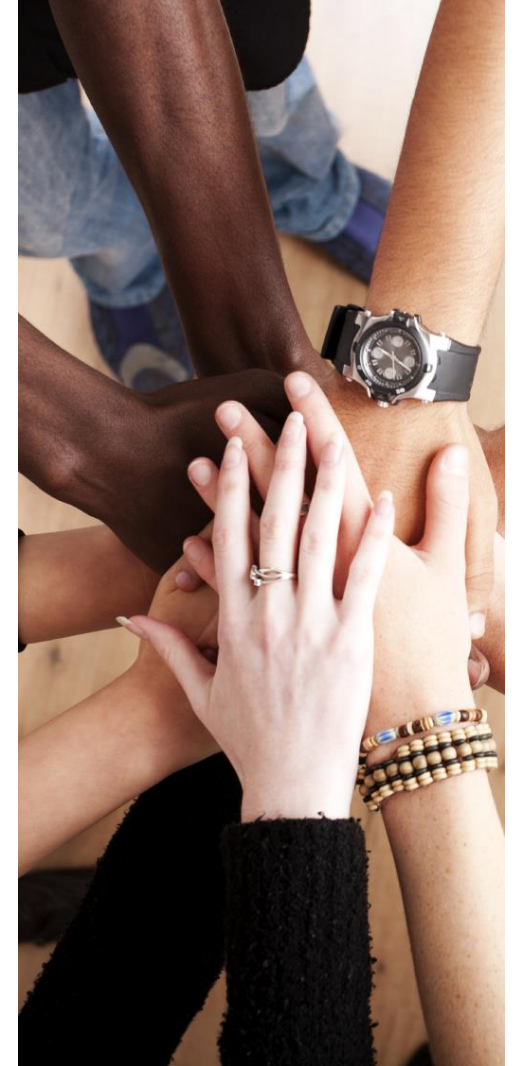
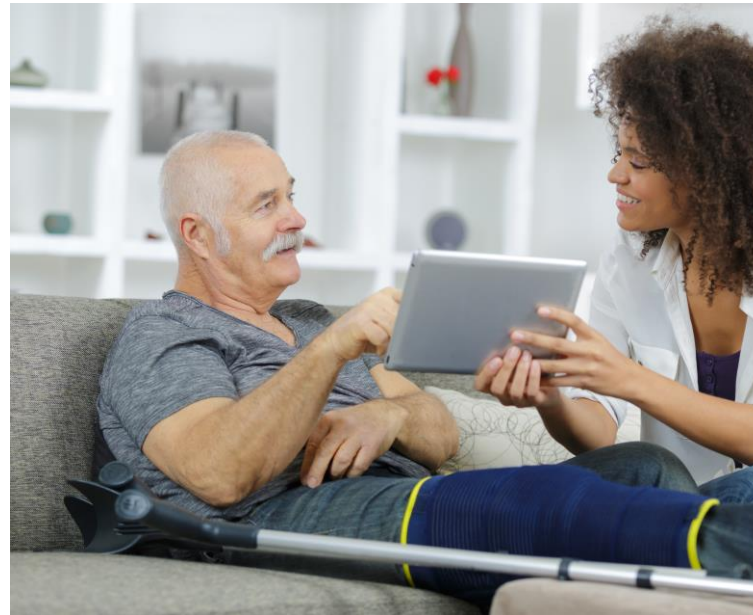
Collective Action

Poverty Education

903HELP.org

# WORKING TOGETHER TO STRENGTHEN OUR COMMUNITY

- COLLECTIVE ACTION
- UNDERSTANDING POVERTY
- 903HELP.ORG





Thursday at 6 PM – 8 PM  
St. Louis Baptist Church  
4000 Frankston Hwy  
Tyler



THE TYLER LOOP INVITES YOU  
TO A COMMUNITY CONVERSATION ON

**HEAD START AND PRE-K  
EDUCATION IN TYLER**

# ORGANIZATIONAL ANNOUNCEMENTS



East Texas  
Human Needs Network

**BE CURIOUS,**  
NOT JUDGMENTAL.

*Walt-Whitman*



East Texas  
Human Needs Network

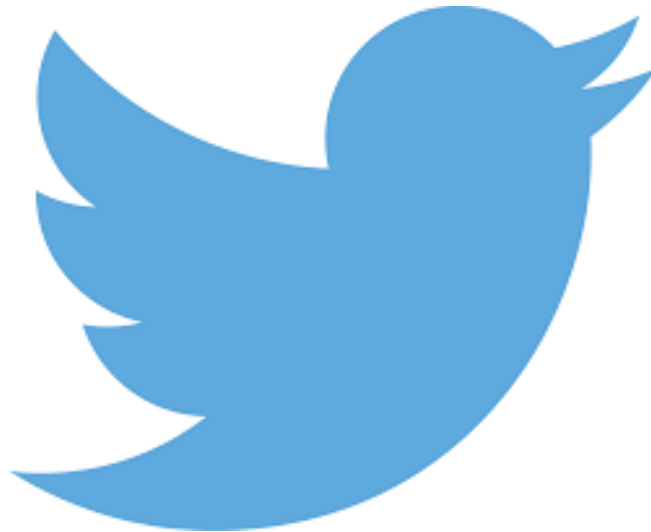


East Texas  
Human Needs Network

# Follow us & share your stories



[@etxhumanneedsnetwork](#)



[@ethumanneeds](#)



[@etxhumanneedsnetwork](#)



East Texas  
Human Needs Network



East Texas Human  
Needs Network

*Thank you*

## CONTACT US

---

- Pam Jacobsen      [pam@ethnn.org](mailto:pam@ethnn.org)
- Susan Walden      [susan@ethnn.org](mailto:susan@ethnn.org)
- Christina Fulsom      [christina@ethnn.org](mailto:christina@ethnn.org)
  
- 903.216.3211
- [www.ETHNN.org](http://www.ETHNN.org)